



Tokyo University of Agriculture and Technology (TUAT)

WISE Program*

(Doctoral Program for World-leading Innovative & Smart Education)

Excellent Leader Development for Super Smart Society by
New Industry Creation and Diversity

The second recruitment for applications April 2022 Enrollment Update on Apr. 19, 2022

*The WISE Program is a five-year integrated doctoral course in which students can acquire credits for additionally-provided lectures and praxis while being enrolled in a regular graduate school. The Program offers students the following kinds of experiences.

1. Studying abroad and taking part in international collaborative research with overseas research institutions
2. Carrying out collaborative research with private companies (a system to match doctoral candidates with companies will also be introduced)

Applicants should be enrolled in Master course or Doctoral course (including the second semester of Ph.D.) at TUAT in April 2022, with a strong determination to obtain Ph.D. at TUAT. For details, please refer to the qualification requirements outlined on Page 4.



Tokyo University of Agriculture and Technology

What is the WISE Program?

Program Outline

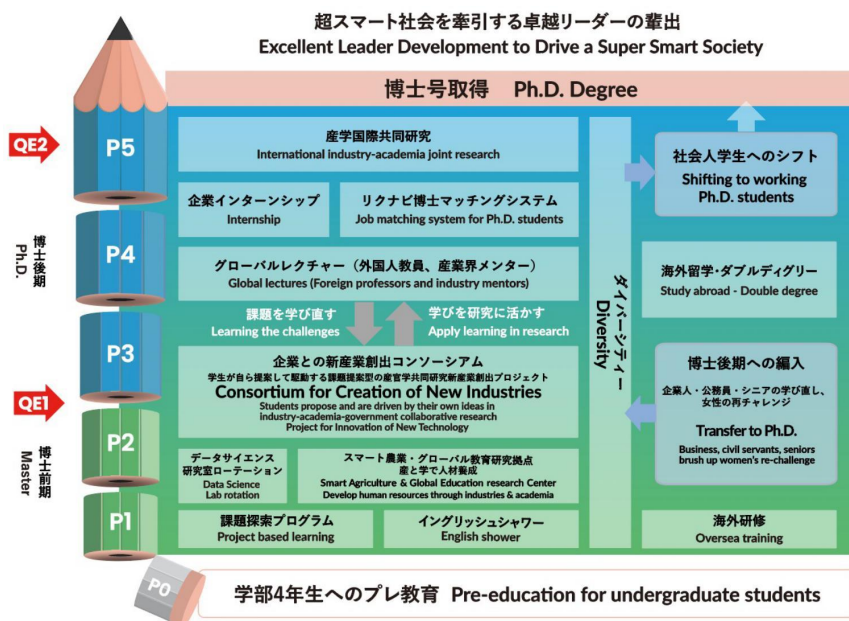
The Tokyo University of Agriculture and Technology (TUAT) WISE Program (Program name: Excellent Leader Development for Super Smart Society by New Industry Creation and Diversity) is making a call for student applications. Applicants must be enrolling in Master course at TUAT in April 2022 or October, 2021, and Doctoral course at TUAT in April 2022. – Students in any areas and majors at TUAT are eligible.

The distinctive features of the WISE Program are creation of new industries and diversity. In particular, through the joint creation of agricultural science and engineering, and in cooperation with private companies and overseas research and educational institutions, WISE Program is working to foster high-level doctoral students with creation of new industries that will contribute to the agricultural distribution revolution realized through advanced engineering technology as its main theme. Specifically, the Program aims to nurture Ph.D. degree holders with the following type of capabilities.

1. Those who will leverage the collaboration of agriculture and engineering, and use advanced engineering technology to create new industries that offer solutions for the social challenges in the agricultural science and its related fields
2. Those who will encourage diversity (e.g., gender, nationality, social experience) for promoting innovation
3. Excellent leaders who have the holistic perspectives, creativity, the appreciation and understanding of diversity, international competitiveness and high-level expertise

Curriculum

In the first and second years of the Program, students engage in group work to acquire problem-solving skills. Also implemented is training abroad at an overseas partner institution, intended to enhance English language skills and provide overseas experience. There are also lectures by businesspersons from cooperation companies as well as project-based practical education through the Consortium for the Creation of New Industries, which consists of private companies and public research institutions. Industry and academia work as one to nurture human resources.



From the third year of the Program, students also engage in practical activities – including issue-proposal-type (problem-based) joint industry-academia research and international collaborative research at overseas partner institutions – to acquire useful skills for working in the industrial world. In addition to completing one's major, a condition for completing the Program will be to select and study the distinctive subjects provided by the WISE Program and pass the Qualifying Examination (QE). The QEs are given two times in principle – in the latter half of the second year of the Master's program (QE1), and in the third year of the Doctoral program (QE2).

The WISE Program's Distinctive Assistance

Assistance for Studying Abroad

The WISE Program offers various assistance and support related to the development of global human resources. For example, short-term overseas training (about 1 week) is carried out for Program students in their first and second years, and assistance is offered for related travel expenses. Studying abroad utilizing laboratory rotation is also available. Meanwhile, from the third year onward, generous assistance is offered in relation to expenses for medium- to long-term (6 months to 1 year) studies abroad. During the preparatory period for such studies abroad, assistance for boosting English language skills is provided through “English Shower” training.



Assistance for Gaining Work Experience



Program students attend lectures given by businesspersons and researchers, who work at private companies or partner research institutions, for an opportunity to hear real-world stories from the front line of industry. From the third year onward, students can receive guidance for proposing themes for doing research with companies, or advises to get research funds. There is a variety of assistance offered for the nurturing of PhDs who are strongly motivated to contribute to the industrial world. It includes support that cannot be experienced through conventional post graduate education, such as student research developing into joint research between the student and a company.

Assistance for after Program Completion



To help PhD students who have completed the Program find positions at appropriate places, such as in industry or at international organizations, where they can play an active role, the Program offers assistance through the development and implementation of a job matching system that brings Program PhD students and private companies together.

Assistance for Proactive Learning

Program students summarize their learning from lectures and exercises in a portfolio for continuous evaluation of self. They also carry out self-evaluations of their problem-setting capabilities, conceptual abilities, creativity, planning and implementation capacities, integration competency, diversity comprehension, and communication skills. Doctoral advisors and collaborative teaching staff then evaluate these as competency evaluations for encouraging self-growth. These evaluations can be confirmed online using smartphones and other terminals. Students can see how their Program experiences lead to self-growth, which makes efficient learning possible for students.

Qualification Requirements

•The applicants should be the students who are enrolled in the first year of the Master courses (including the first year of the five-year integrated Doctoral course in BASE) at TUAT in April 2022 or October 2021, who have the intention to go on to the Doctoral courses at TUAT after obtaining Master degrees, and who have goals that match with the educational and research philosophies of the WISE Program.

•The applicants should be the students who are enrolled in the first year of the Doctoral courses (including who are in the third year of Cooperative Division of Veterinary Sciences and the five-year integrated Doctoral course in BASE) at TUAT in April 2022 and who have goals that match with the educational and research philosophies of WISE Program. Students who are joining the “United graduate schools” need to be registered at the TUAT as the primal institute (not based on the other partner universities).

Applicants will be widely recruited, and there are no restrictions in regard to majors, area of research, nationality, gender, or working status (i.e., working adults are included).

Students who pass the final selection and are formally admitted as the WISE-Program students shall take prescribed subjects. After obtaining required credits and passing the QE2, the student shall have “WISE Program completed” in the Diploma. The Master or Doctorate degree will be obtained from the graduate school of affiliation.

*Before making your application to this program, you have to receive an approval of your primary supervisor. If you are admitted as a student of this program, you must contact each of your supervisors and confer on your future research plan.

Application Form

The form can be downloaded from the “Call for Applications” page of the WISE Program website.

Selection / Admission Criteria for the Program

1. Initial Selection: Document screening

A comprehensive assessment will be made of such matters as academic grades as an undergraduate and the reason for application.

2. Secondary Selection: Interview

A comprehensive assessment will be made of academic and research capabilities as well as the understanding of and enthusiasm for this Program through a 10-minute presentation on the topics that follow below as well as a 7-minute Q&A session (total of 17 minutes for the interview).

- 1) Describe the reasons why you are applying for the WISE program
- 2) For M1, summary of the research carried out up to now and the research plan in the Master Course

For D1, summarize your research up to the master course. A summary of your most recent research paper is acceptable for a working student. Outline of research plan in the doctoral course and beyond.

- 1) Research prospect based on the expected learning experience in this program
- 2) Future vision after completing this program and acquiring the degree

Number of students admitted to the Program from the 2nd recruitment:

M1 - 10 students ; D1 - 5 students

Application and Selection Schedule (Update on April 19)

Application Period: From Apr. 19, 2022 (Tue.) to 17:00 April 27, 2022 (Wed.)

Initial Selection (Document Screening):

Successful applicants announced on May 9, 2022 (Mon.)

Secondary Selection (Interviews): Online Interview on May 10 (Tue) and 11 (Wed), 2022

The details will be announced to successful applicants of primary selection individually.

Secondary selection (Interviews): Successful applicants announced on around May 12, 2022 (Thu)

Application results (Will be sent via e-mail)

(Orientation for WISE Program will be held online or hybrid (depends on situation) from 15:00 on May 16, 2022 (Mon))



[Contact] The Student Support Office, Educational Affairs Division, TUAT

E-mail: girkikaku@m2.tuat.ac.jp Phone: +81-42-367-5943/5953/5545

Website: <http://www.wise.tuat.ac.jp/en/>